



# Plan Manager

## Real-Time Map-Based Monitoring

Plan Manager is a module of Security Center that provides interactive mapping functionality to better visualize and manage security environments. With the ability to dynamically navigate through facilities and manage a greater number of cameras, doors, automatic license plate recognition (ALPR) cameras, intrusion areas, and other security devices, Plan Manager provides complete and real-time coverage in large and multi-site environments.



## Key Benefits

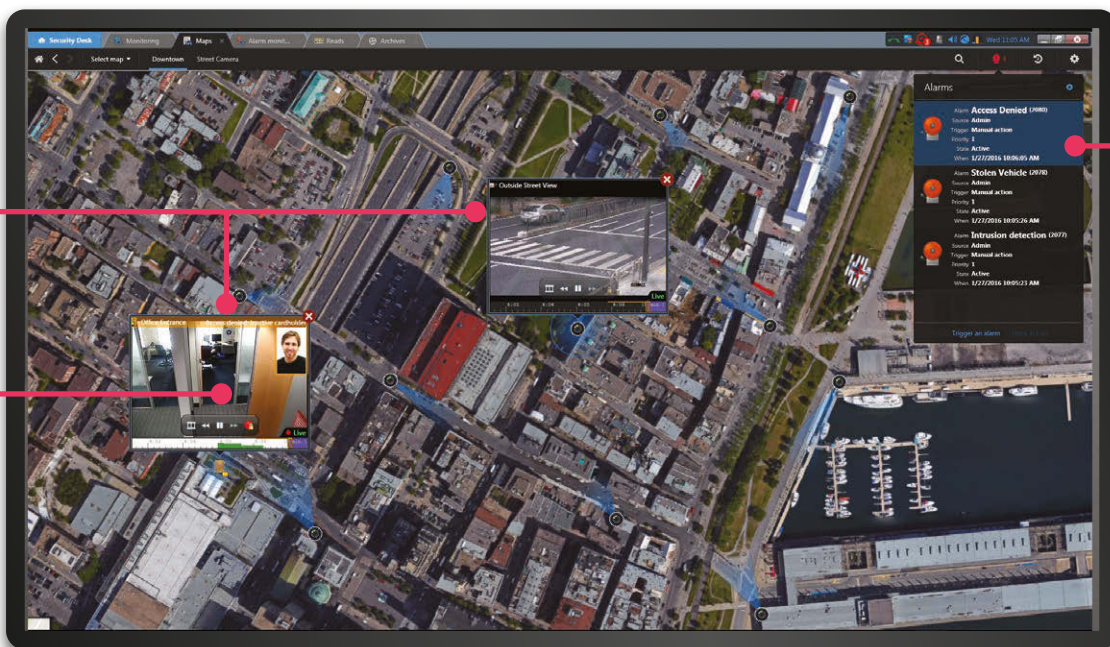
- ▶ Enhance situational awareness with intuitive view of cameras and security device locations on maps
- ▶ Receive and respond to real-time events and alarms directly on maps
- ▶ Support multiple file formats and online maps for fluid navigation across distributed sites and large geographic areas

## Ensure a Rapid Response

Beyond traditional map capabilities, Plan Manager offers multiple options for managing devices and system notifications, enabling operators to access critical information and respond to alarms in less time. This includes the ability to consolidate detailed, multi-layer maps from various sources, such as image files and online maps, and have them span across multiple monitors for fluid navigation of a number of facilities and large areas. Operators are notified of the precise location of alarms and device status changes that are dynamically presented through different animations, and customizable icons and object colors.

View multiple entities at once

Monitor live or recorded video



Access recent events and alarms

## Key Features and Specifications

- ▶ **Event Monitoring:** Receive and view real-time events, and locate them directly on a map
- ▶ **Dynamic Alarm Management:** Rapidly identify and respond to alarms by acknowledging or forwarding to other users
- ▶ **Interactive Security Devices:** View and manage cameras, doors, intrusion zones, inputs/outputs (IO), ALPR units, and other custom devices
- ▶ **Federation Support:** Access remote Plan Manager maps for federated sites and manage federated entities, such as cameras, doors and ALPR units
- ▶ **Map Shortcuts:** Designate map links and favorite views to rapidly access areas and alarms within a site
- ▶ **Fluid Map Navigation:** Take advantage of multi-layer technology and navigate across floor plans with the same fluidity as GIS maps
- ▶ **Multi-Monitor Support:** Span a single map across multiple monitors for an enhanced viewing experience
- ▶ **Smart Click View:** Users can select and point all cameras to a specific location on a map. All PTZ cameras in the field of view will orient to the selected area
- ▶ **Monitor Intrusion Areas:** Draw areas and contours in a map to identify intrusion zones that are linked to intrusion devices and alarms
- ▶ **Designate Walls & Obstacles:** Draw an accurate representation of objects on a map that realistically obstruct a camera's field of view

## Plan Manager Software Packages

Feature	Basic	Standard	Advanced
Interactive mapping interface embedded within Security Center	○	○	○
Support for cameras, doors, areas, zones, and Security Center entities	○	○	○
Camera field of view presented on map	○	○	○
View entity status change and control devices	○	○	○
Raster formats import (JPG, PNG, etc)	○	○	○
Multi-Monitor Support	○	○	○
Federation Support	○	○	○
Maps Failover Support	○	○	○
Respond to triggered alarms on map		○	○
Represent walls and obstacles on maps to restrict camera FOV		○	○
Vector format import (PDF)		○	○
Control and orient PTZ cameras (includes Smart Click view)		○	○
Operate zones, intrusion areas, and intercoms from map		○	○
Custom object support		○	○
KML format import			○